

Sea Link

Volume 6: Environmental Statement

Document: 6.4.3.10

Part 3 Kent

Chapter 10

Socio-Economics, Recreation and Tourism - Figures

Planning Inspectorate Reference: EN020026

Version: A

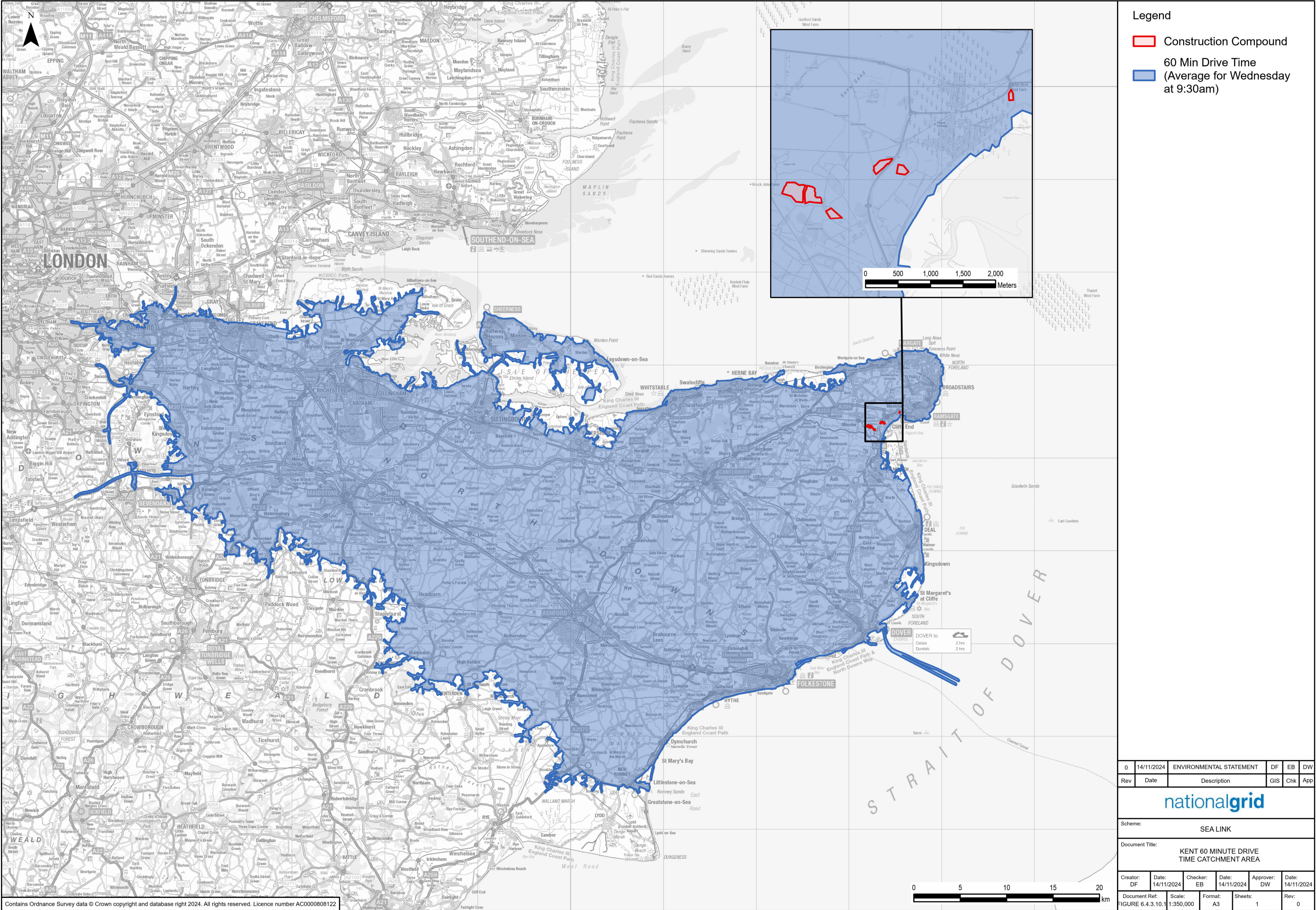
March 2025

Infrastructure Planning (Applications: Prescribed Forms and Procedure)
Regulations 2009 Regulation 5(2)(a)

Contents

Application Document 6.4.3.10 Socio-Economics, Recreation and Tourism - Figures

Application Document 6.4.3.10.1 Kent 60 Minute Drive Time Catchment Area



National Grid plc
National Grid House,
Warwick Technology Park,
Gallows Hill, Warwick.
CV34 6DA United Kingdom

Registered in England and Wales
No. 4031152
nationalgrid.com